

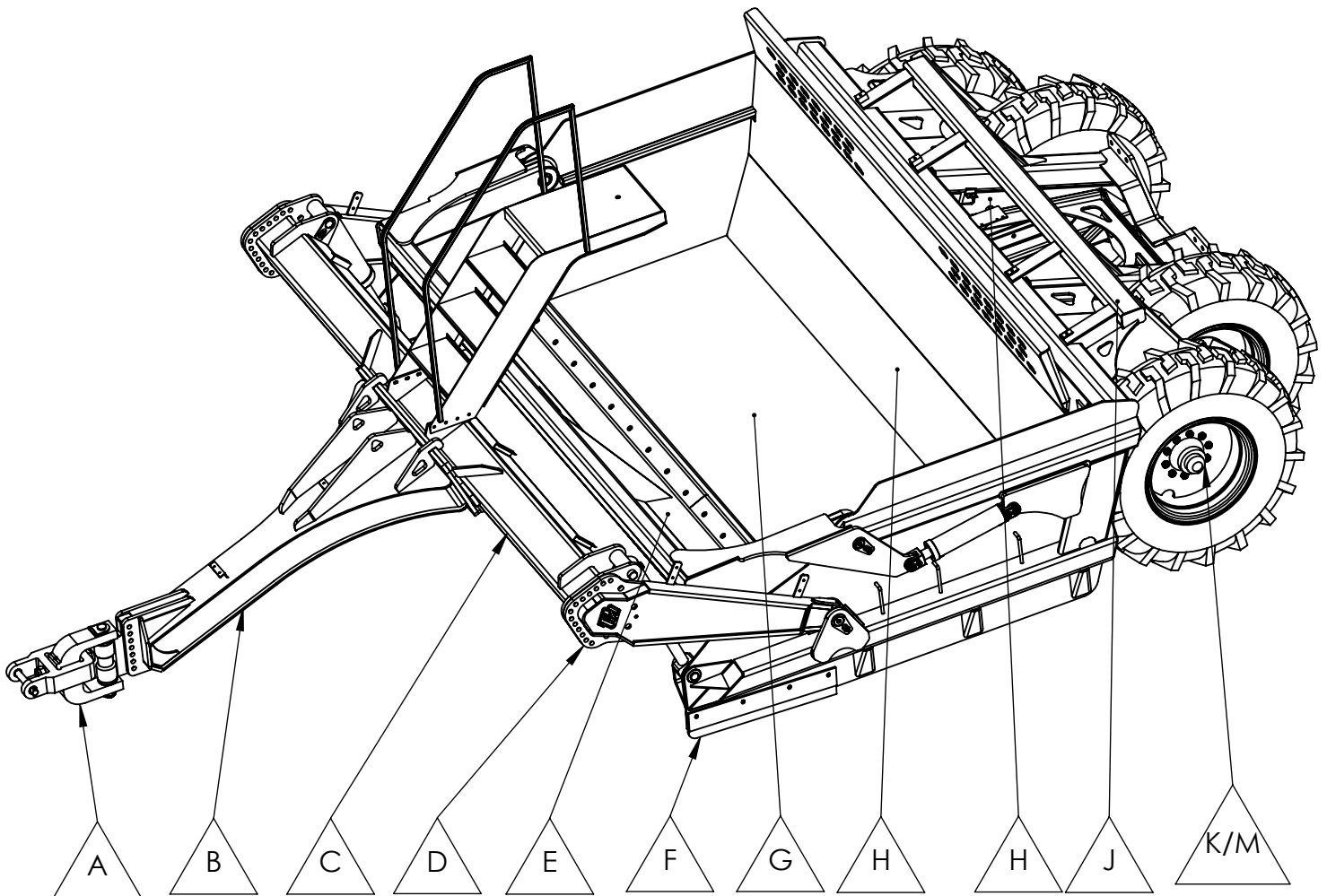
EJECTOR CARRY ALL

PARTS BOOK

MODELS: LEC14XL, LEC12XL & LEC10C



www.porterswelding.com



* THE SERIAL NUMBER OF THE EQUIPMENT IS REQUIRED

CALL YOUR LOCAL DEALER FOR PARTS

EJECTOR CARRY ALL

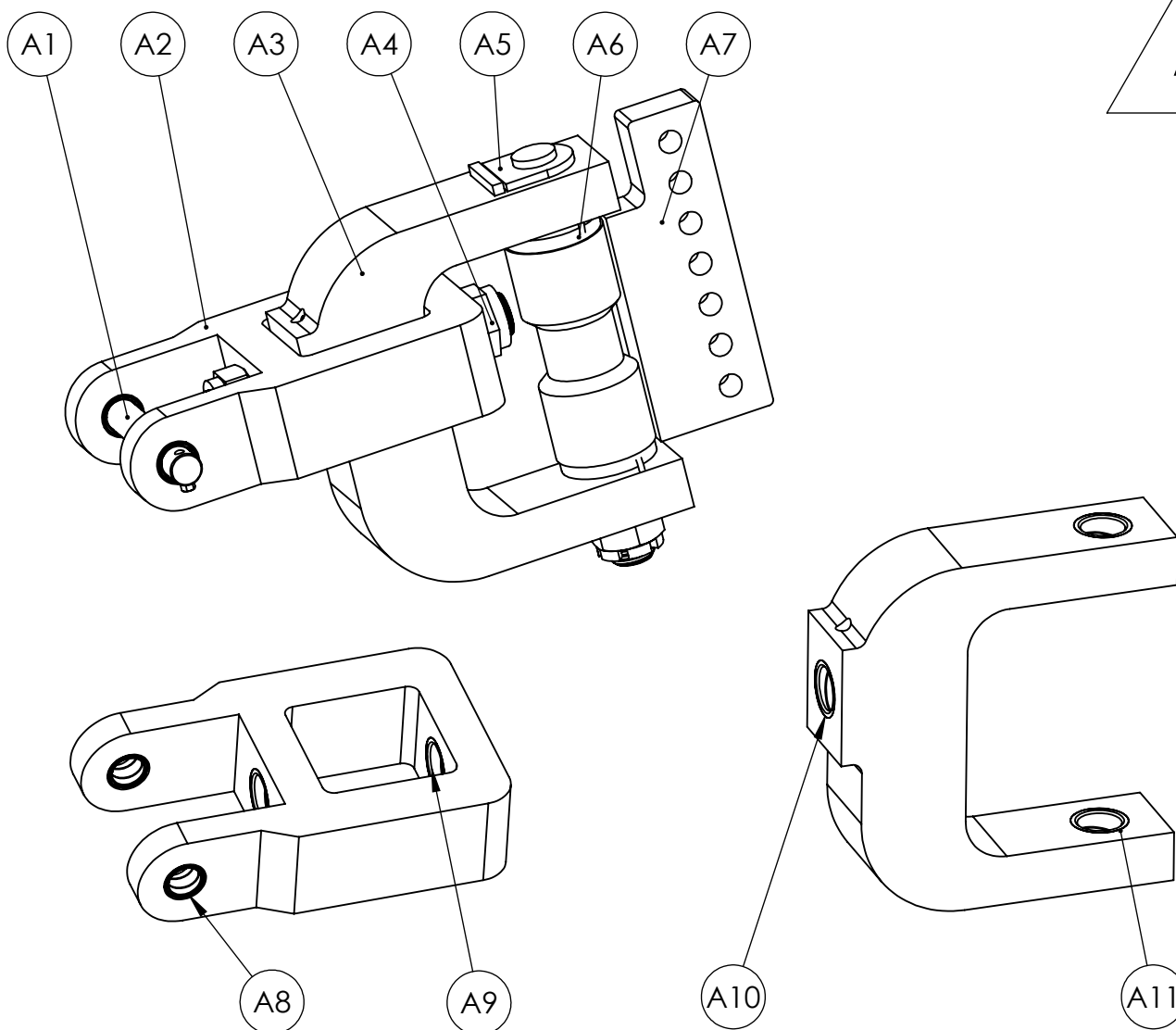
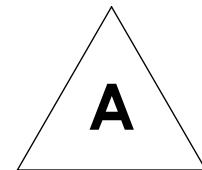
PARTS BOOK

MODELS: LEC14XL, LEC12XL & LEC10C

YOKE



www.porterswelding.com



Item	Part Number	Description	QTY
A1	LEC-CT931	Hitch Pin	1
A2	LEC-CT925	Inner Yoke	1
A3	LEC-CT926	Outer Yoke	1
A4	1063283	Horizontal Pin Assembly	1
A5	1063284	Vertical Pin Assembly	1
A6	1063146	Yoke Washer	2
A7	1063282	Pivot Pin Housing Assembly	1
A8	LEC-CT927	Hardened Bushing	2
A9	LEC-CT928	Hardened Bushing	2
A10	LEC-CT928	Hardened Bushing	2
A11	LEC-CT929	Hardened Bushing	2

* THE SERIAL NUMBER OF THE EQUIPMENT IS REQUIRED

CALL YOUR LOCAL DEALER FOR PARTS

EJECTOR CARRY ALL

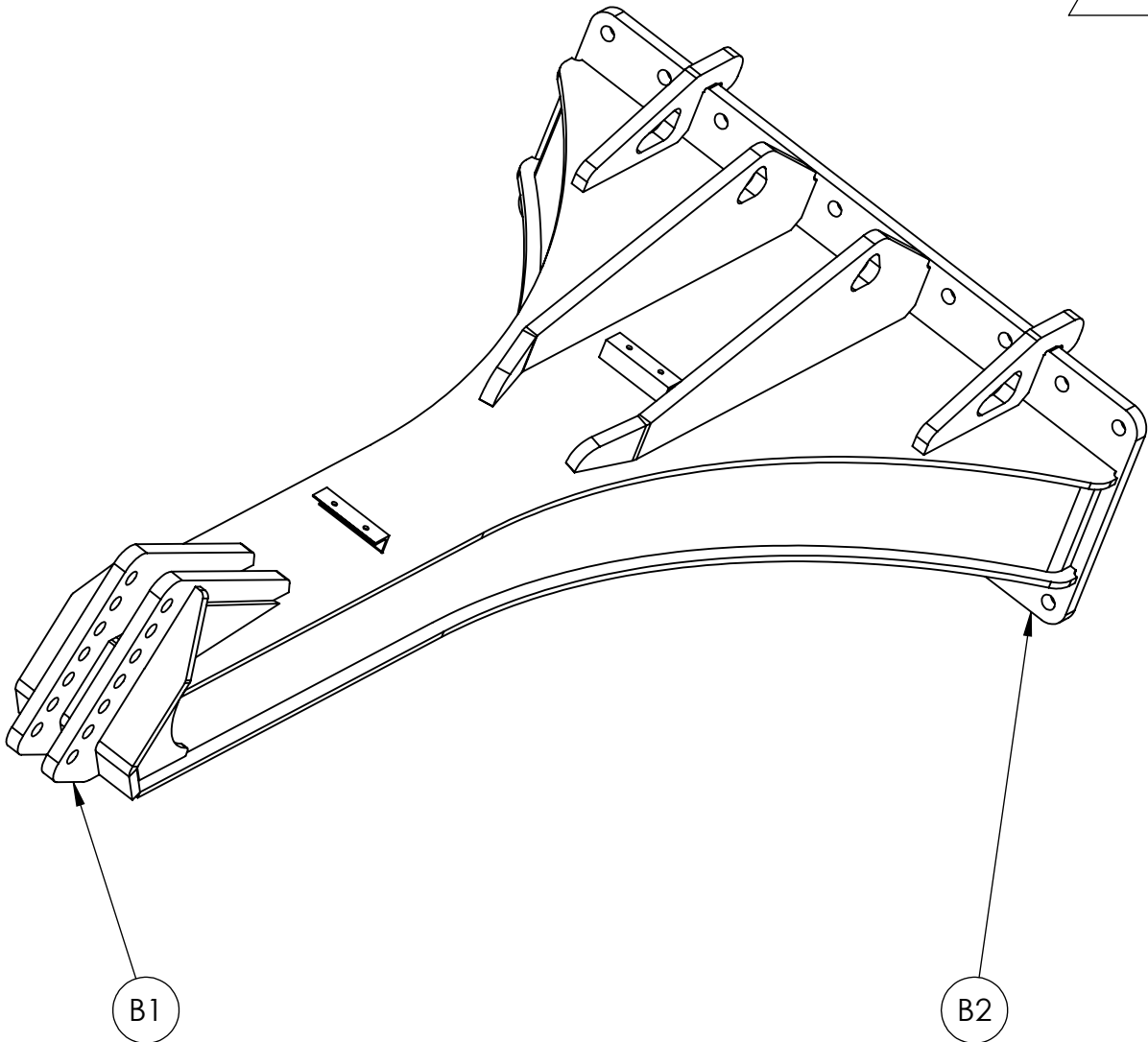
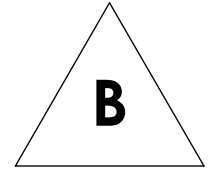
PARTS BOOK

MODELS: LEC14XL, LEC12XL & LEC10C

TONGUE



www.porterswelding.com



Item	Part Number	Description	QTY
B1	LEC-YBK	Yolk Bolt Kit	1 Kit
B2	LEC-TBK	Tongue Bolt Kit	1 Kit

* THE SERIAL NUMBER OF THE EQUIPMENT IS REQUIRED

CALL YOUR LOCAL DEALER FOR PARTS

EJECTOR CARRY ALL

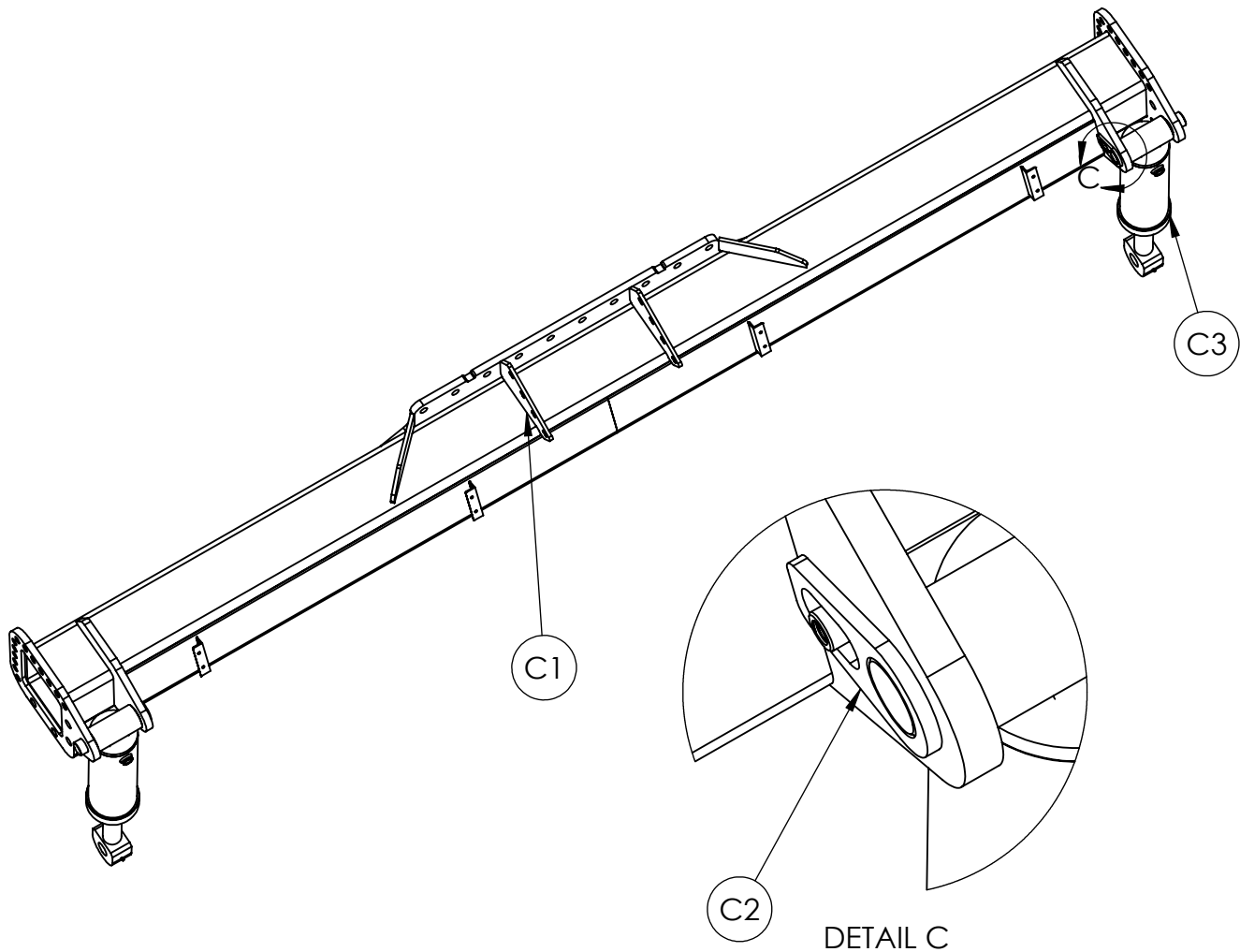
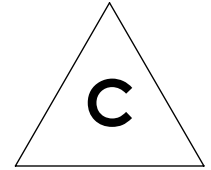
PARTS BOOK

MODELS: LEC14XL, LEC12XL & LEC10C

MAIN BEAM



www.porterswelding.com



Item	Part Number	Description	QTY
C1	LEC-TBK	Tower Bolt Kit	1 Kit
C2	LEC-CA803	Main Beam Upper Pin Assembly	2
C3	616-CYL	6 X 16 Cylinder	2
C3	SLK-6020	6 X 16 Cylinder Seal Kit	2

* THE SERIAL NUMBER OF THE EQUIPMENT IS REQUIRED

CALL YOUR LOCAL DEALER FOR PARTS

EJECTOR CARRY ALL

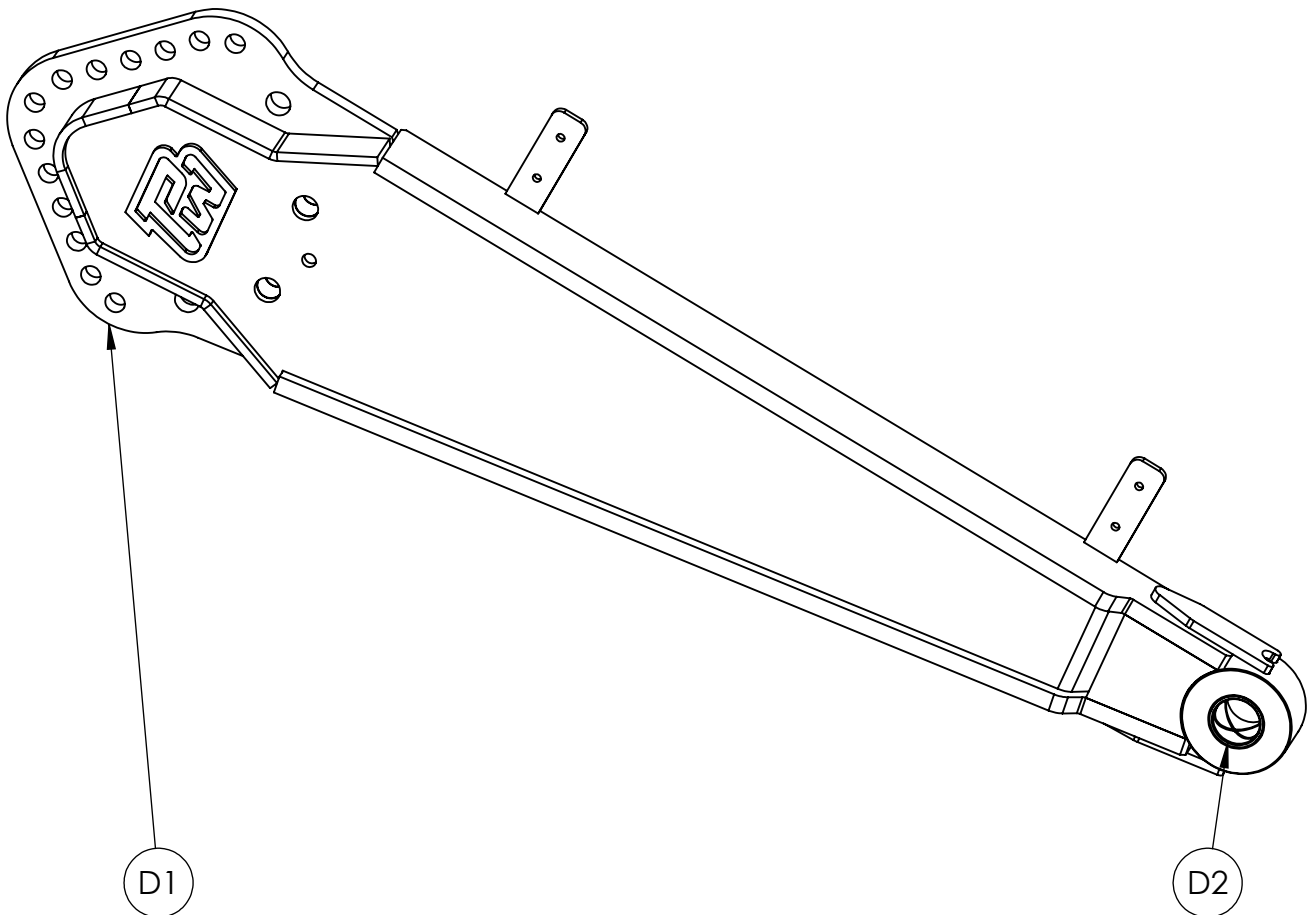
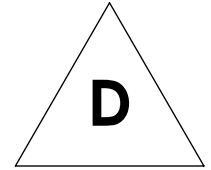
PARTS BOOK

MODELS: LEC14XL, LEC12XL & LEC10C

ARM



www.porterswelding.com



Item	Part Number	Description	QTY
D1	LEC-ABK	Arm Bolt Kit	1 Kit
D2	PW-LB037	Hardened Bushing	1

* THE SERIAL NUMBER OF THE EQUIPMENT IS REQUIRED

CALL YOUR LOCAL DEALER FOR PARTS

EJECTOR CARRY ALL

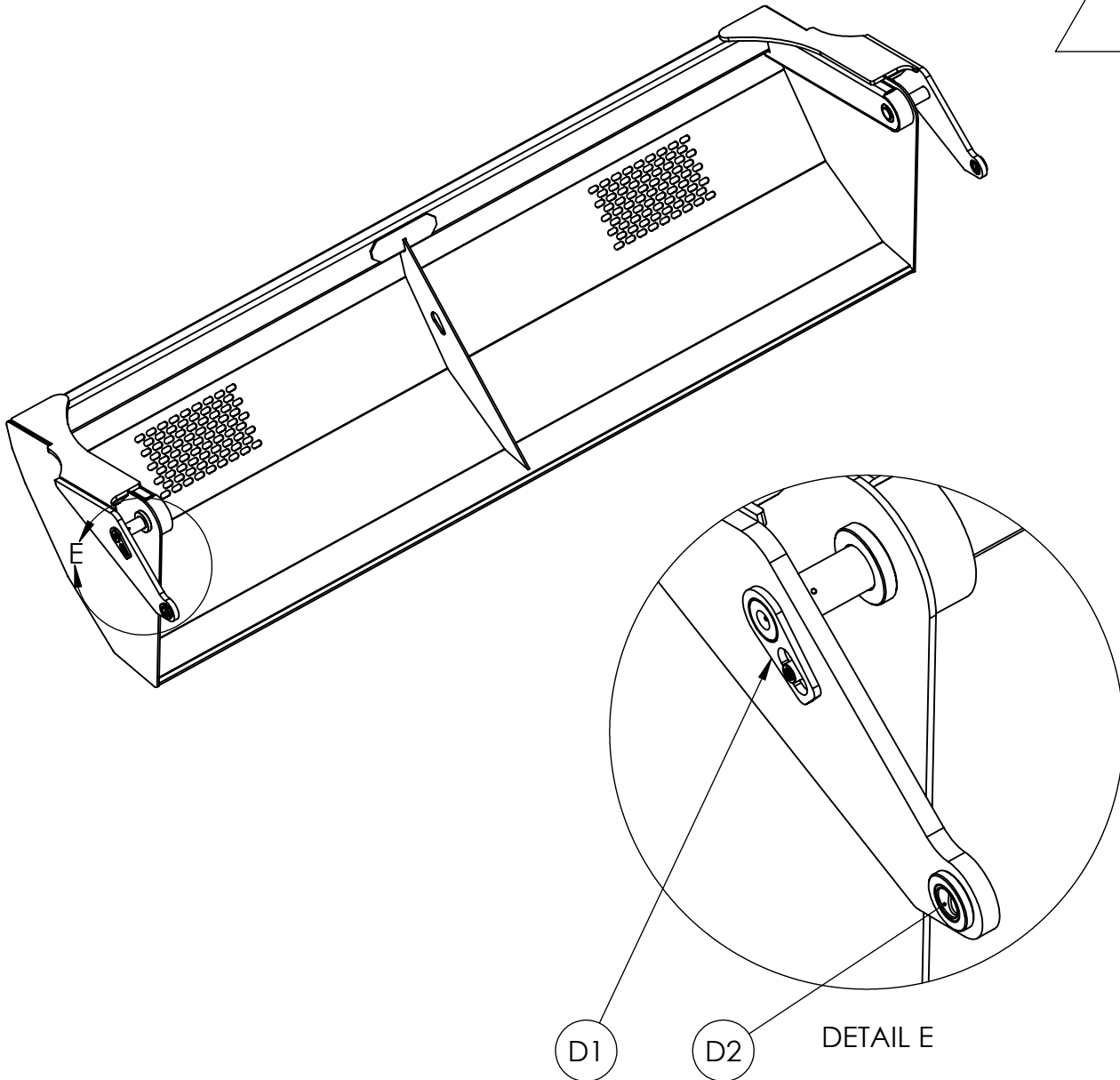
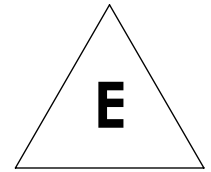
PARTS BOOK

MODELS: LEC14XL, LEC12XL & LEC10C

FRONT DOOR



www.porterswelding.com



Item	Part Number	Description	QTY
E1	LEC-CA525	Front Door Pin Assembly	2
E2	PW-LB039	Hardened Bushing	2

* THE SERIAL NUMBER OF THE EQUIPMENT IS REQUIRED

CALL YOUR LOCAL DEALER FOR PARTS

EJECTOR CARRY ALL

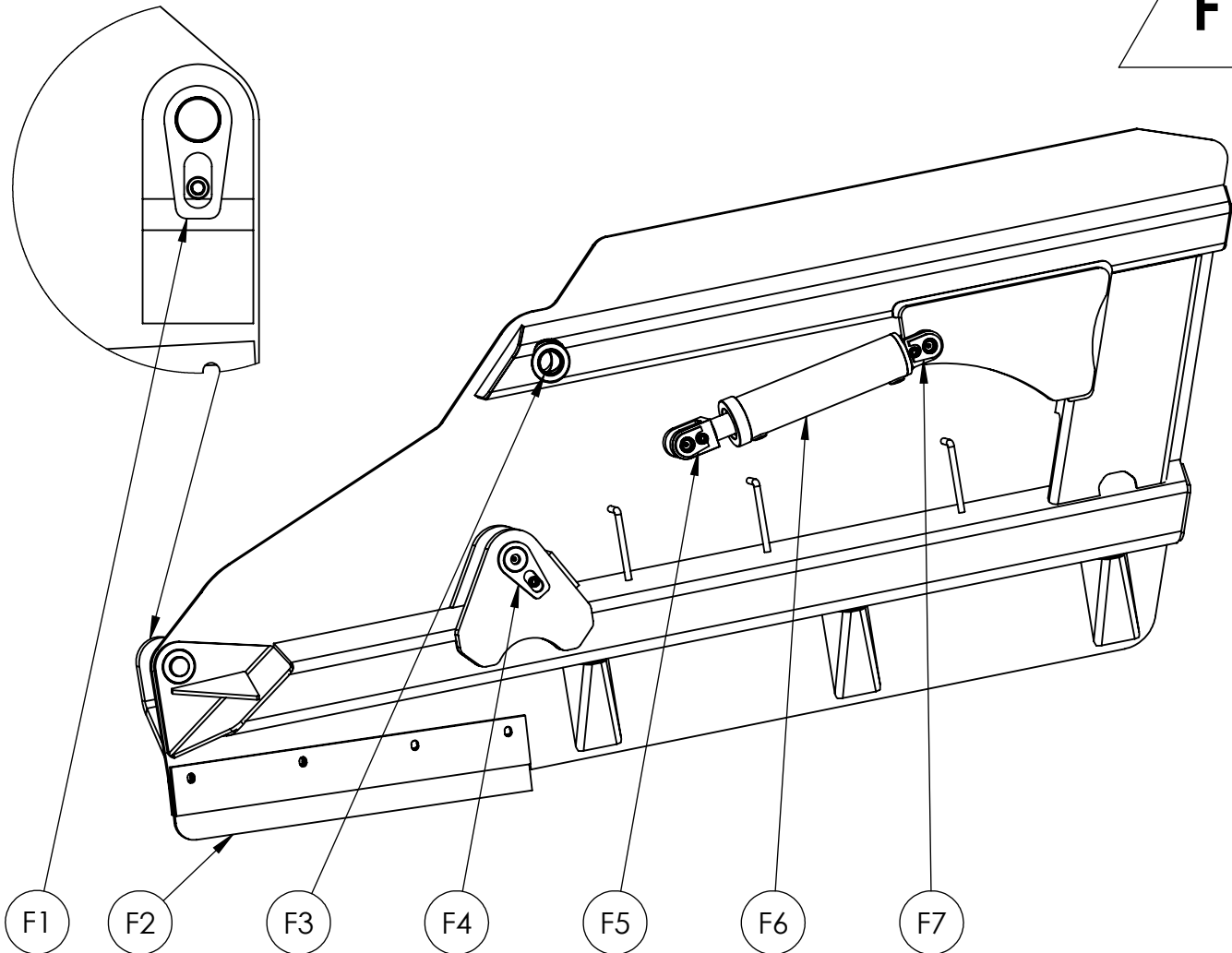
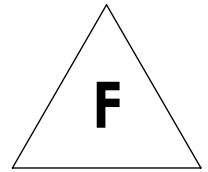
PARTS BOOK

MODELS: LEC14XL, LEC12XL & LEC10C

SIDE



www.porterswelding.com



Item	Part Number	Description	QTY
F1	LEC-CA802	Main Beam Lower Pin Assembly	1
F2	SLB-A006	Slobber Bit Assembly Left	1
F2	SLB-A007	Slobber Bit Assembly Right	1
F3	PW-LB035	Door Hardened Bushing	1
F4	LEC-CA526	Door Pin Assembly	1
F5	PW-LA109	Door Cylinder Pin Assembly	1
F6	414-CYL	4 x 14 Cylinder	1
F6	SLK-4017**	4 x 14 Cylinder Seal Kit	1
F7	PW-LA109	Door Cylinder Pin Assembly	1

* THE SERIAL NUMBER OF THE EQUIPMENT IS REQUIRED
 ** BRAND NAME, BORE SIZE AND ROD SIZE ARE REQUIRED
 CALL YOUR LOCAL DEALER FOR PARTS

EJECTOR CARRY ALL

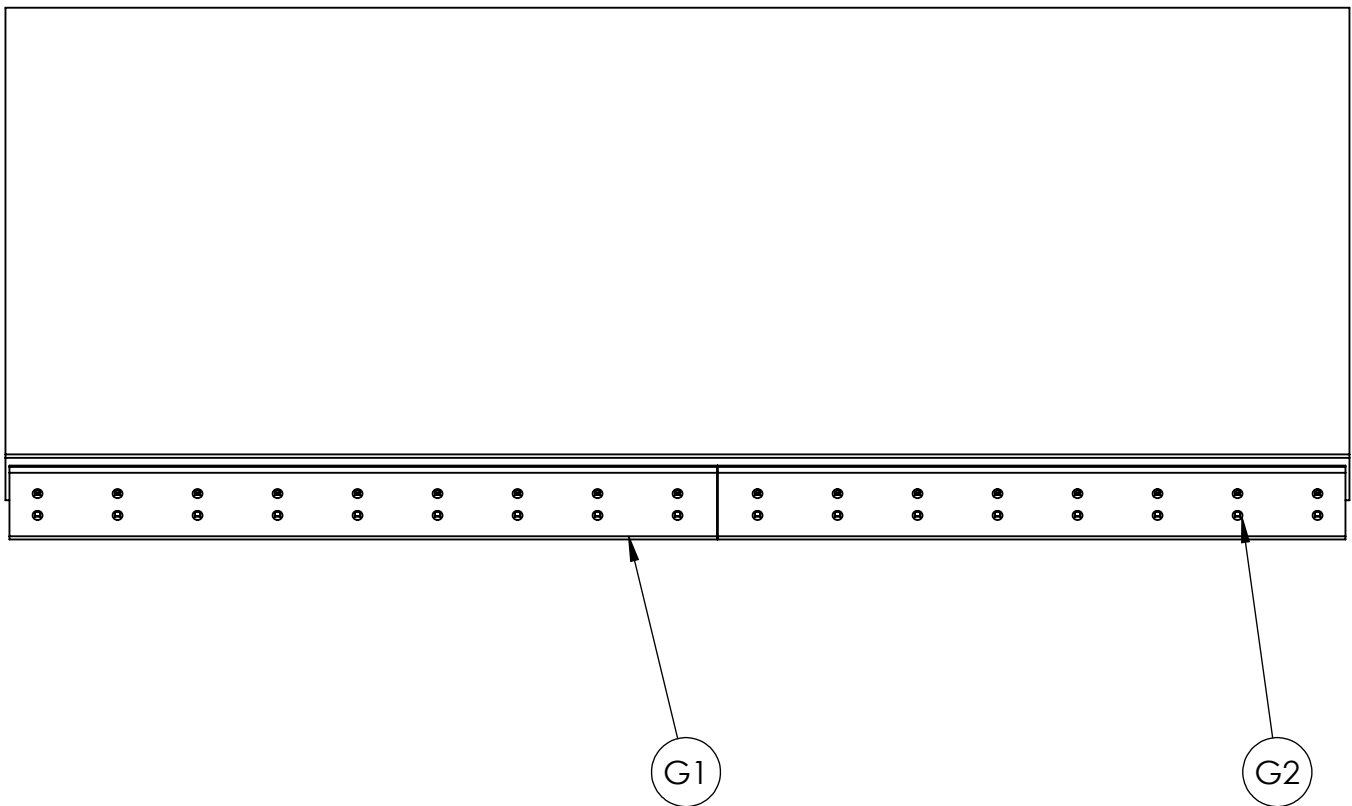
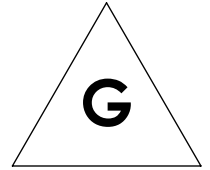
PARTS BOOK

MODELS: LEC14XL, LEC12XL & LEC10C

FLOOR



www.porterswelding.com



Item	Part Number 14	Part Number 12	Part Number 10	Description	QTY
G1	LEC-BLD-14	LEC-BLD-12	LEC-BLD-10	Blade Kit	1 KIT
G3	LEC-BOL-14	LEC-BOL-12	LEC-BOL-10	Blade Bolt Kit	1 KIT

* THE SERIAL NUMBER OF THE EQUIPMENT IS REQUIRED

CALL YOUR LOCAL DEALER FOR PARTS

EJECTOR CARRY ALL

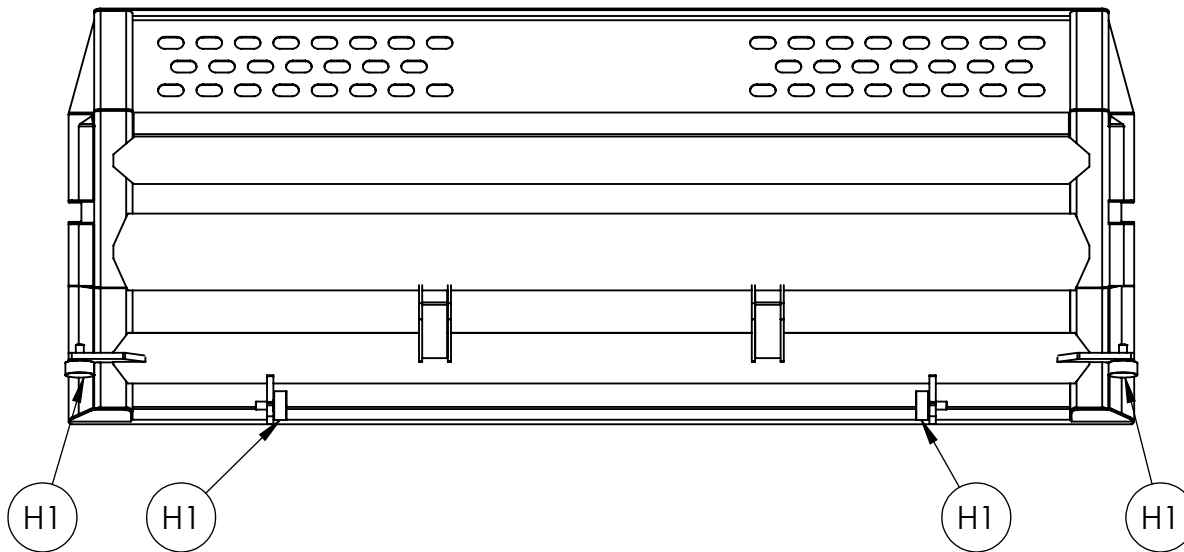
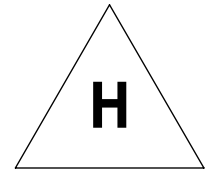
PARTS BOOK

MODELS: LEC14XL, LEC12XL & LEC10C

PUSH DOOR

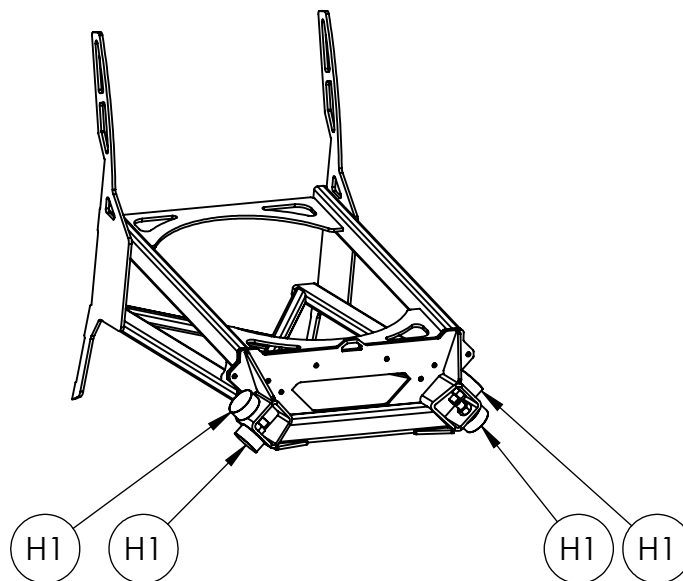


www.porterswelding.com



Item	Part Number	Description	QTY
H1	LEC-CT207	Roller Bearing	4

PUSH CAGE



Item	Part Number	Description	QTY
H1	LEC-CT207	Roller Bearing	4

* THE SERIAL NUMBER OF THE EQUIPMENT IS REQUIRED

CALL YOUR LOCAL DEALER FOR PARTS

EJECTOR CARRY ALL

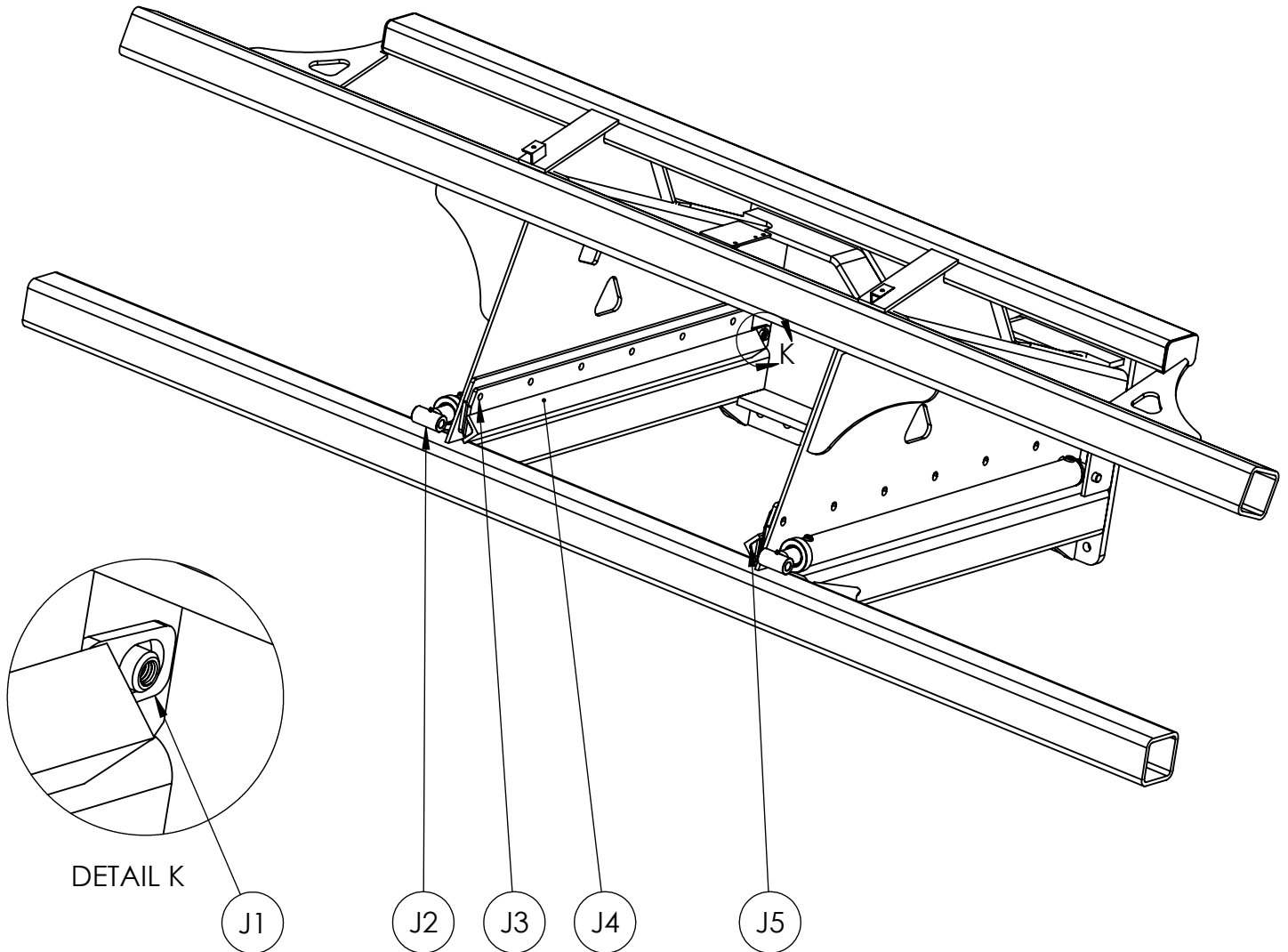
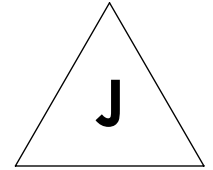
PARTS BOOK

MODELS: LEC14XL, LEC12XL & LEC10C

FRAME



www.porterswelding.com



Item	Part Number	Description	QTY
J1	LEC-CA111	Push Pin Assembly	2
J2	348-CYL	3 X 48 Cylinder	2
J2	SLK-3020	3 X 48 Cylinder Seal Kit	2
J3	LEC-PBK	Push Bolt Kit	1 KIT
J4	LEC-CA109	Guide Track Assembly Right	1
J5	LEC-CA110	Guide Track Assembly Left	1

* THE SERIAL NUMBER OF THE EQUIPMENT IS REQUIRED

CALL YOUR LOCAL DEALER FOR PARTS

EJECTOR CARRY ALL

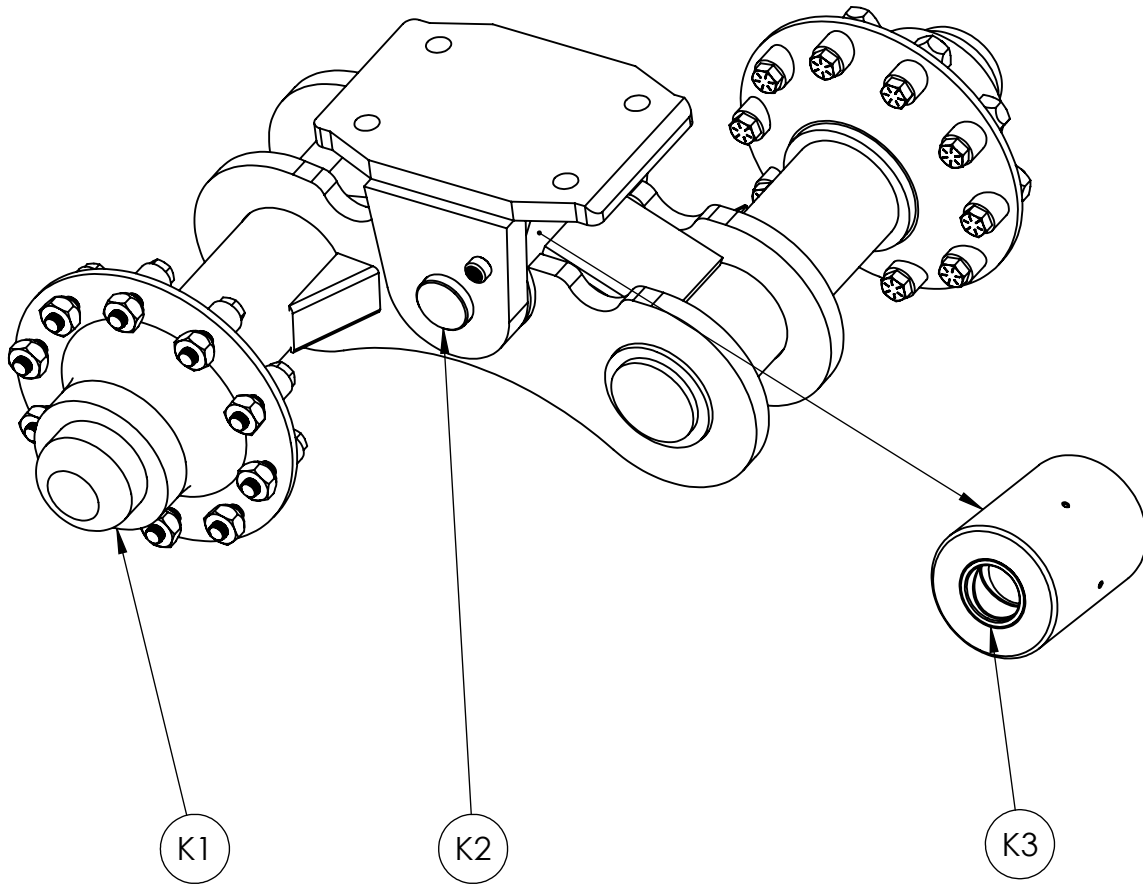
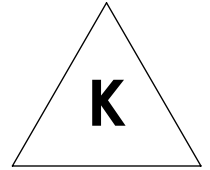
PARTS BOOK

MODELS: LEC14XL, LEC12XL & LEC10C

WALKER



www.porterswelding.com



Item	Part Number	Description	QTY
K1	10A-HUS-R	Hub Assembly Right Thread	1
K1	10A-HUS-L	Hub Assembly Left Thread	1
K2	LEC-CA113	Pivot Pin Assembly	1
K3	PW-LB037	Hardened Bushings	2

* THE SERIAL NUMBER OF THE EQUIPMENT IS REQUIRED

CALL YOUR LOCAL DEALER FOR PARTS

EJECTOR CARRY ALL

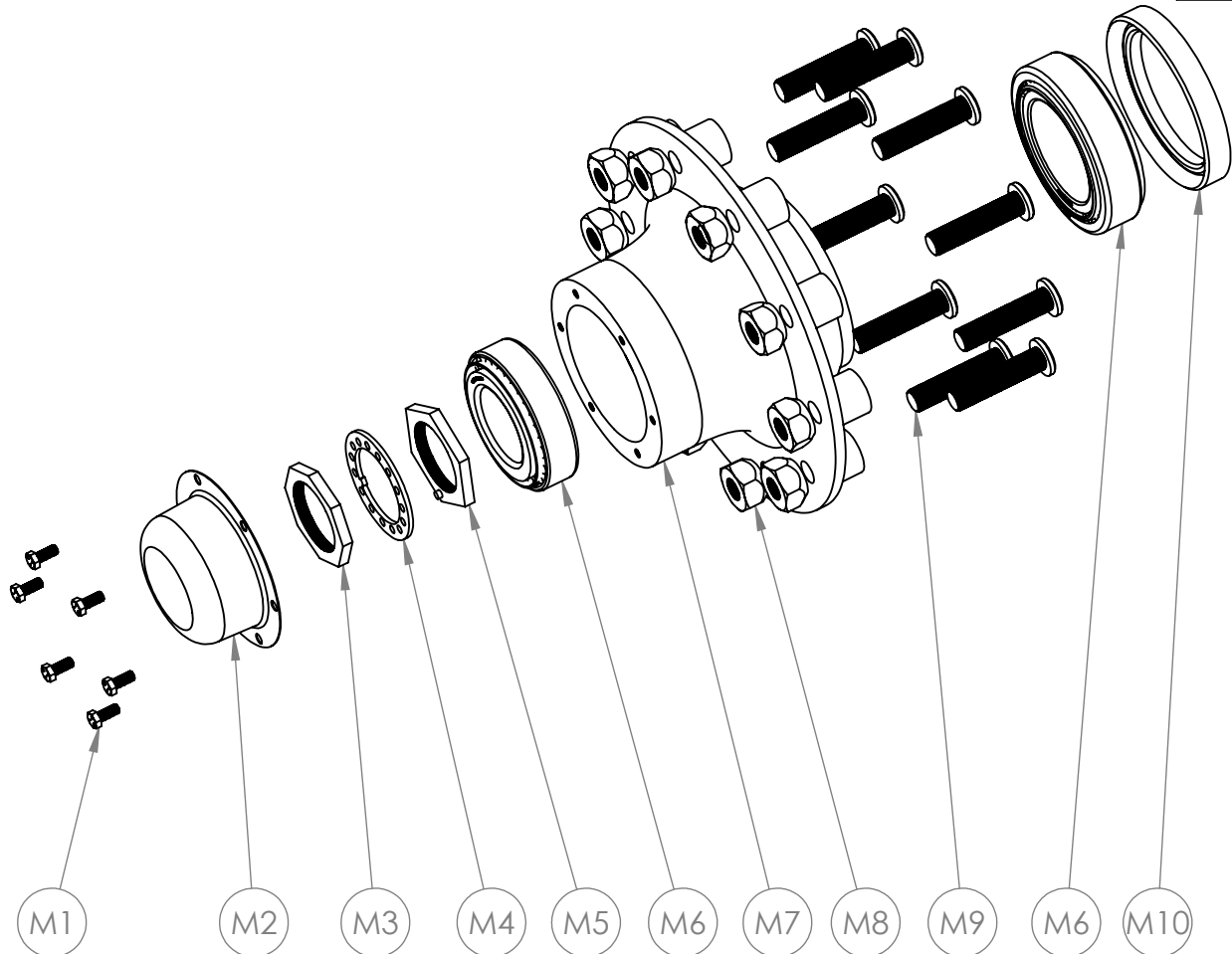
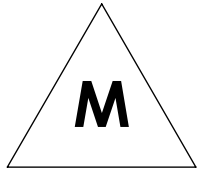
PARTS BOOK

MODELS: LEC14XL, LEC12XL & LEC10C

HUB



www.porterswelding.com



ITEM	PART NUMBER	DESCRIPTION	QTY
M1	-	5/16" BOLT	6
M2	LEC-DUC	DUST CAP	1
M3	10A-NUT-O	OUTER NUT	1
M4	10A-WAS	WASHER	1
M5	10A-NUT-I	INNER NUT	1
M6	LEC-WH-BER	BEARING KIT	1
M7	10A-HUB-R	HUB RIGHT THREAD	1
M7	10A-HUB-L	HUB LEFT THREAD	1
M8	10A-LUG-R	LUG NUT RIGHT THREAD	10
M8	10A-LUG-L	LUG NUT LEFT THREAD	10
M9	10A-STD-R	STUD RIGHT THREAD	10
M9	10A-STD-L	STUD LEFT THREAD	10
M10	LEC-WH-SEL	SEAL	1

* THE SERIAL NUMBER OF THE EQUIPMENT IS REQUIRED

CALL YOUR LOCAL DEALER FOR PARTS